

SIDE LOCKS

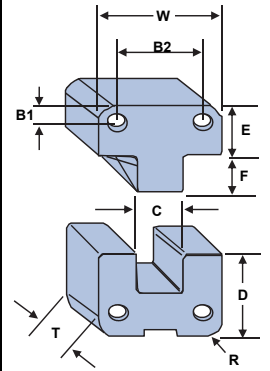


MALE - MATERIAL: Tool Steel With Black Oxide

HARDNESS: 58-62 RC

FEMALE - D-2: With Titanium Nitride Coating

CATALOG NUMBER	W +.0000" -.0004"	T +.000" -.002"	C	E +.000" -.002"	F +.000" -.010"	OVERALL HEIGHT	B1 +.010" -.010"	B2 +.010" -.010"	D +.000" -.002"	R +.010" -.000" RADIUS	SHCS (4)	PRICE
SL-100	1.0000	.375	.500	.875	.530	2.000	.250	.500	1.125	.187	10-32 X 1/2	123.50
SL-125	1.2500	.500	.500	.875	.660	2.000	.250	.750	1.125	.187	8-32 X 5/8	134.45
SL-150	1.5000	.500	.563	.875	.560	1.750	.250	1.000	.875	.187	8-32 X 5/8	136.42
SL-200	2.0000	.500	.750	.875	.660	2.250	.312	1.375	1.375	.250	10-32 X 5/8	146.40
SL-300	3.0000	.750	1.250	.875	1.130	2.750	.375	2.250	1.875	.250	1/4-20 X 1	190.25
SL-400	4.0000	1.000	1.500	1.375	1.130	3.750	.500	3.000	2.375	.500	3/8-16 X 1-1/4	235.95
SL-500	5.0000	1.250	2.0000	1.375	1.630	4.250	.625	3.750	2.875	.500	1/2-13 X 1-1/2	292.75
SL-600	6.0000	1.500	2.500	1.375	1.630	4.250	.625	4.750	2.875	.500	1/2-13 X 1-3/4	383.35



TAPERED INTERLOCKS (ROUND)



MATERIAL: D2

HARDNESS: 58-62 RC

FEMALE					MALE							
CATALOG NUMBER	PRICE	O.D. +.0000" -.0005"	I.D.	M +.015" -.020"	TAP SIZE	CATALOG NUMBER	PRICE	O.D. +.0000" -.0005"	I.D.	L	M +.015" -.000"	TAP SIZE
TIF-051	21.99	.5000	.312	.875	10-24	TIM-051	20.66	.5000	.312	.312	.875	10-24
TIF-052	22.35			1.187		TIM-052	20.99				1.187	
TIF-053	22.55			1.375		TIM-053	21.15				1.375	
TIF-071	22.18	.7500	.500	.875	1/4-20	TIM-071	20.80	.7500	.500	.281	.875	1/4-20
TIF-072	22.29			1.187		TIM-072	20.90				1.187	
TIF-073	22.37			1.375		TIM-073	21.00				1.375	
TIF-101	23.32	1.0000	.625	.875	1/4-20	TIM-101	22.05	1.0000	.625	.343	.875	1/4-20
TIF-102	23.47			1.187		TIM-102	22.25				1.187	
TIF-103	23.70			1.375		TIM-103	22.40				1.375	
TIF-150	29.88	1.5000	1.000	1.125	5/16-18	TIM-150	28.50	1.5000	1.000	.500	1.125	5/16-18
TIF-151	30.30			1.375		TIM-151	28.88				1.375	
TIF-152	30.75			1.625		TIM-152	29.31				1.625	

