

METRIC *KNIGHTRIDE*™ SERIES H-13 HOTWORK EJECTOR PINS

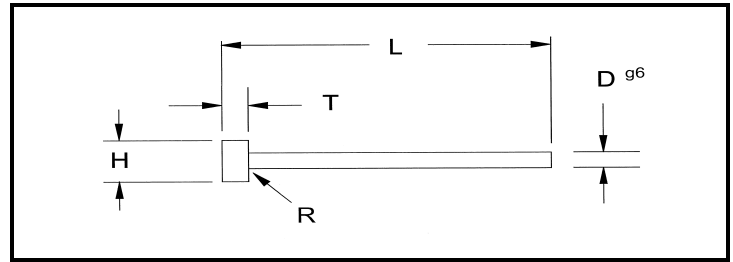
MATERIAL : H-13 HOTWORK DIE STEEL

CORE: THROUGH-HARDENED TO 41-45 RC

SURFACE: ION NITRIDED TO 65-74 RC

HEADS: ANNEALED

STRAIGHT STYLE



TOLERANCES (METRIC ISO)				
PIN DIA. (D)g6		R	Head Dia. (H)	+0.0 mm -0.2 mm
SIZE	TOLERANCE			
0 to 3 mm	-.002 mm -.008 mm	0.3 mm	Head Thick (T)	+0.00 mm -0.05 mm
3.5 to 6 mm	-.004 mm -.012 mm	0.3 mm		
6.5 to 10 mm	-.005 mm -.014 mm	0.5 mm	Length (L)	+2.0 mm -0.0 mm
11 to 18 mm	-.006 mm -.017 mm	0.8 mm		
20 to 25 mm	-.007 mm -.020 mm	0.8 mm		

HOW TO ORDER: EXAMPLE		
Qty.	Cat. No.	Length
24	ME-2.5	L-160

CATALOG NUMBER	D PIN DIA.	H HEAD DIA.	T HEAD THICK.	NET PRICE EACH (US \$)				PKG. QTY
				LENGTHS				
				L-160	L-250	L-315	L-400	
ME-2.0	2.0	4	2	3.32	3.42	Q	Q	12
ME-2.5	2.5	5	2	3.37	3.67	4.28	Q	
ME-3.0	3.0	6	3	2.60	3.83	4.08	4.56	
ME-3.5	3.5	7	3	3.98	4.69	5.66	Q	
ME-4.0	4.0	8	3	2.81	4.18	4.49	5.30	
ME-4.5	4.5	8	3	4.39	5.51	6.27	Q	
ME-5.0	5.0	10	3	3.01	3.88	4.95	6.14	
ME-5.5	5.5	10	3	4.64	5.87	6.73	Q	
ME-6.0	6.0	12	5	3.77	5.41	6.27	7.88	
ME-6.5	6.5	12	5	5.15	7.19	8.31	Q	
ME-7.0	7.0	12	5	5.51	7.85	8.98	Q	
ME-8.0	8.0	14	5	4.90	7.19	8.52	10.61	
ME-9.0	9.0	14	5	6.63	10.10	11.63	Q	
ME-10.0	10.0	16	5	5.76	8.67	10.15	12.50	
ME-11.0	11.0	16	5	8.77	13.46	15.91	Q	
ME-12.0	12.0	18	7	6.78	9.79	13.46	Q	
ME-12.5	12.5	18	7	8.26	11.73	15.35	Q	
ME-14.0	14.0	22	7	8.57	12.65	Q	Q	6
ME-16.0	16.0	22	7	9.59	14.59	Q	Q	
ME-18.0	18.0	24	7	Q	19.18	Q	Q	
ME-20.0	20.0	26	8	Q	22.44	Q	Q	4
ME-25.0	25.0	32	10	Q	39.22	Q	Q	2

Q = Price Per Quotation

QUANTITY DISCOUNTS		
Apply to all standard ME Pins, and are combinable with PT, RHX, RC, RCX, MPT, and RX Ejector and Core Pins - One shipment, one destination		
300 Pieces (one size).....Less 5%	500 Pieces (cumulative).....Less 5%	1200 Pieces (cumulative).....Less 7%

Please see PAGE 1 for a complete list of modifications that are available for any of the ROYAL Family of Pins and Punches